

AGENDA

Tuesday, August 14

09:00 h	Session 3: Hands-on sessions and workshops			
	A (●○○) Language lateralization and localization (including fMRI, Wada fTCD, rTMS, electrical stimulation mapping)	B (●●○) Neurosurgeons' session: Transfer of different imaging modalities into neuronavigation	C (●●○) The MAP-hub: morphometric and volumetric analysis – module 1	D (●●●) 1 Epilog: Automated EEG source imaging in clinical routine: usability and interpretation
12:00 h	Participants case presentations I (oral and posters)			
13:00 h	Lunch			
14:00 h	Session 4: Hands-on sessions and workshops			
	E (●○○) Indication, application, processing and interpretation of PET and SPECT	F (●●○) Neurosurgeons' session: stereotactic epilepsy surgery – from implantation to coagulation	G (●●○) The MAP-hub: morphometric and volumetric analysis – module 2	H (●○○) BESA: EEG and MEG based electrical source analysis – module 1
17:30 h	Social evening - Guided tour through medieval Marburg, dinner			

Wednesday, August 15

09:00 h	Session 5: Hands-on sessions and workshops			
	I (●○○) Reading MRI and finding epileptogenic lesions	J (●●○) Demarcating epileptogenic lesions on MRI workstations and PACS systems	K (●●○) Pediatricians' session: structural and functional imaging in children	L (●○○) BESA: EEG and MEG based electrical source analysis – module 2
12:00 h	Participants case presentations II (oral and posters)			
13:00 h	Lunch			
14:00 h	Session 6: Hands-on sessions and workshops			
	M (●○○) MRI application workshop: learn to teach your technicians at home	N (●○○) Adult epilepsy surgery. Decision making process and cases	O (●●○) Pediatric epilepsy surgery. Decision making process and cases	P (●○○) BESA: EEG and MEG based electrical source analysis – module 3
17:00 h	Assembly of all participants to discuss present and future SuSIE topics and structure, evaluation of the 2017 SuSIE, closing remarks, certificates and farewell			

Hands-on sessions and workshops are categorized into: ●○○ = basic / ●●○ = advanced / ●●● = high level

■ Industry sponsored session ■ Scientific session ■ SuSIE teaching session



4th SUMMER SCHOOL ON IMAGING IN EPILEPSY

DATE	August 12-15, 2018
PROGRAM DIRECTORS	Prof. Dr. Jörg Wellmer, Ruhr-Epileptologie, Dpt. of Neurology, University Hospital Knappschaftskrankenhaus, Bochum, Germany Prof. Dr. Susanne Knake, Epilepsy Center Hessen, Dpt. of Neurology, University of Giessen and Marburg, Marburg, Germany
LANGUAGE:	English
LOCATION:	Rauischholzhausen Castle Schlosspark 1, 35085 Ebsdorfergrund www.schloss.faber-management.de
ORGANIZATION	Blue Gecko Marketing GmbH ☎ +49 (0) 6421-9684352 ☎ +49 (0) 6421-9684359 ✉ info@bluegecko-marketing.de Förderverein der Neurologie e. V. Klinik für Neurologie, Baldingerstraße 35043 Marburg, Germany ☎ +49 (0) 6421- 5862990 ☎ +49 (0) 6421- 5865444 ✉ ezm@med.uni-marburg.de
IN COOPERATION WITH	Förderverein Ruhr-Epileptologie e.V. Bochum

The SuSIE 2018 is part of the LOEWE CePTER-School.

Registration online at www.imaging-in-epilepsy.org

4th SUMMER SCHOOL ON IMAGING IN EPILEPSY

August 12-15, 2018

Rauischholzhausen Castle
Germany

PROGRAM DIRECTORS

Prof. Dr. Jörg Wellmer, Bochum
Prof. Dr. Susanne Knake, Marburg

Registration now open!

Please visit www.imaging-in-epilepsy.org

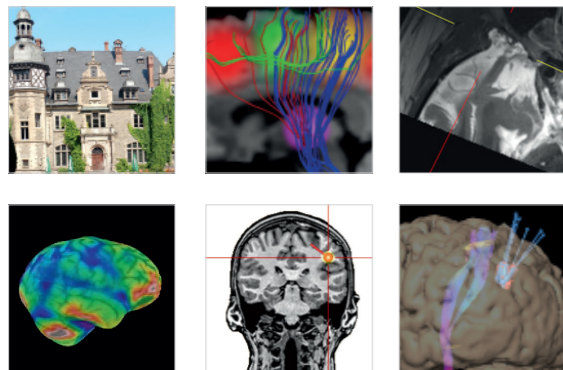


4th SUMMER SCHOOL ON IMAGING IN EPILEPSY

We are happy to announce the 4th SUMMER SCHOOL ON IMAGING IN EPILEPSY – SuSIE 2018.

The 4th SuSIE will take place from August 12th to 15th, 2018. As in 2017, we kindly invite you to Rauschholzhäuser Castle to attend different lectures and workshops, to share knowledge and experience in the field of imaging for epileptologic diagnosis, treatment and research.

SuSIE 2018 will offer various interesting lectures and the opportunity to discuss the state and perspectives for the further development of imaging techniques in Epileptology on Monday, followed by two days of hands-on-training in different workshops on Tuesday and Wednesday.



However, some further developments are planned:

- On Sunday, August 12th, two parallel scientific meetings shall take place: an MRI coil and sequence development workshop and a connectivity analysis in epilepsy workshop. In addition, Brainlab hosts an industry sponsored workshop on functional planning for epilepsy procedures. Participation is free of charge and possible independently of the SuSIE. You are welcome to contribute with session proposals, oral presentations and posters.
- The 2018 key note lecture is given by Prof. Hugues Duffau, Neurosurgeon, Montpellier University Hospital on the topic: “Do fMRI, DTI-fiber tracking and co tell us the truth? Lessons from direct electrostimulation mapping of the brain”.
- During the SuSIE Forum (Monday night) there will be an occasion for eastern European participants to discuss practical application of epilepsy imaging in their region. The session is led by Anna Miron, North-East Carpathian Epilepsy Center, Suceava, Romania.
- Based on the experience with the excellently rated and therefore repeated BESA training course on electrical source analysis given by Stefan Rampp (1 lecture, followed by 3 consecutive work-shops) we now also provide a 6 hour training session for morphometric MRI-Analysis given by Prof. Huppertz (MAP07 software by H.-J. Huppertz).

We are excited to provide an environment for fruitful discussions, vivid exchange with colleagues and an inspiring key note lecture.

We are looking forward to welcoming you to the 2018 SuSIE at wonderful Rauschholzhäuser Castle.

Jörg Wellmer and Susanne Knake

www.imaging-in-epilepsy.org

AGENDA

Sunday, August 12

14:00 h	Scientific Satellite Workshop 1 MRI coil and sequence development	Scientific Satellite Workshop 2 Connectivity analysis in epilepsy	Brainlab Elements Satellite Workshop Functional planning for epilepsy procedures
18:00 h	Get together		
19:00 h	Dinner		

Monday, August 13

09:00 h	Welcome and organization remarks	15:30 h	Connectivity analysis in epileptology
09:30 h	Epilepsy specific MRI protocols	16:00 h	Coffee break
10:00 h	Creating a clinical focus hypothesis from seizure semiology and EEG	16:30 h	Decision making in epilepsy surgery
10:30 h	Strategies to read MRI for detecting epileptogenic lesions	17:00 h	Multimodal image coregistration
11:00 h	The spectrum of epileptogenic lesions – a systematic approach	17:30 h	Neuronavigation in epilepsy surgery
11:30 h	Coffee break	18:00 h	Intraoperative imaging
11:45 h	Computer assisted MRI evaluation for identifying epileptogenic lesions	19:30 h	Welcome Dinner with key note lecture: Do fMRI, DTI-fiber tracking and co tell us the truth? Lessons from direct electrostimulation mapping of the brain. <i>Hugues Duffau, Montpellier</i>
12:15 h	Structural imaging: new technologies (high field, new sequences, head coils)	21:00 h	The SuSIE Forum Table 1: MRI in countries of restricted resources Table 2: Source localization Table 3: MAP Table 4: Connectivity analysis Table 5: Brainlab
12:45 h	DTI fiber tracking and microstructural tissue analysis		
13:15 h	Lunch		
14:00 h	PET and SPECT		
14:30 h	EEG- and MEG based electrical source analysis		
15:00 h	fMRI, MEG, fTCD and co for language lateralization and localization		

■ Industry sponsored session ■ Scientific session ■ SuSIE teaching session

